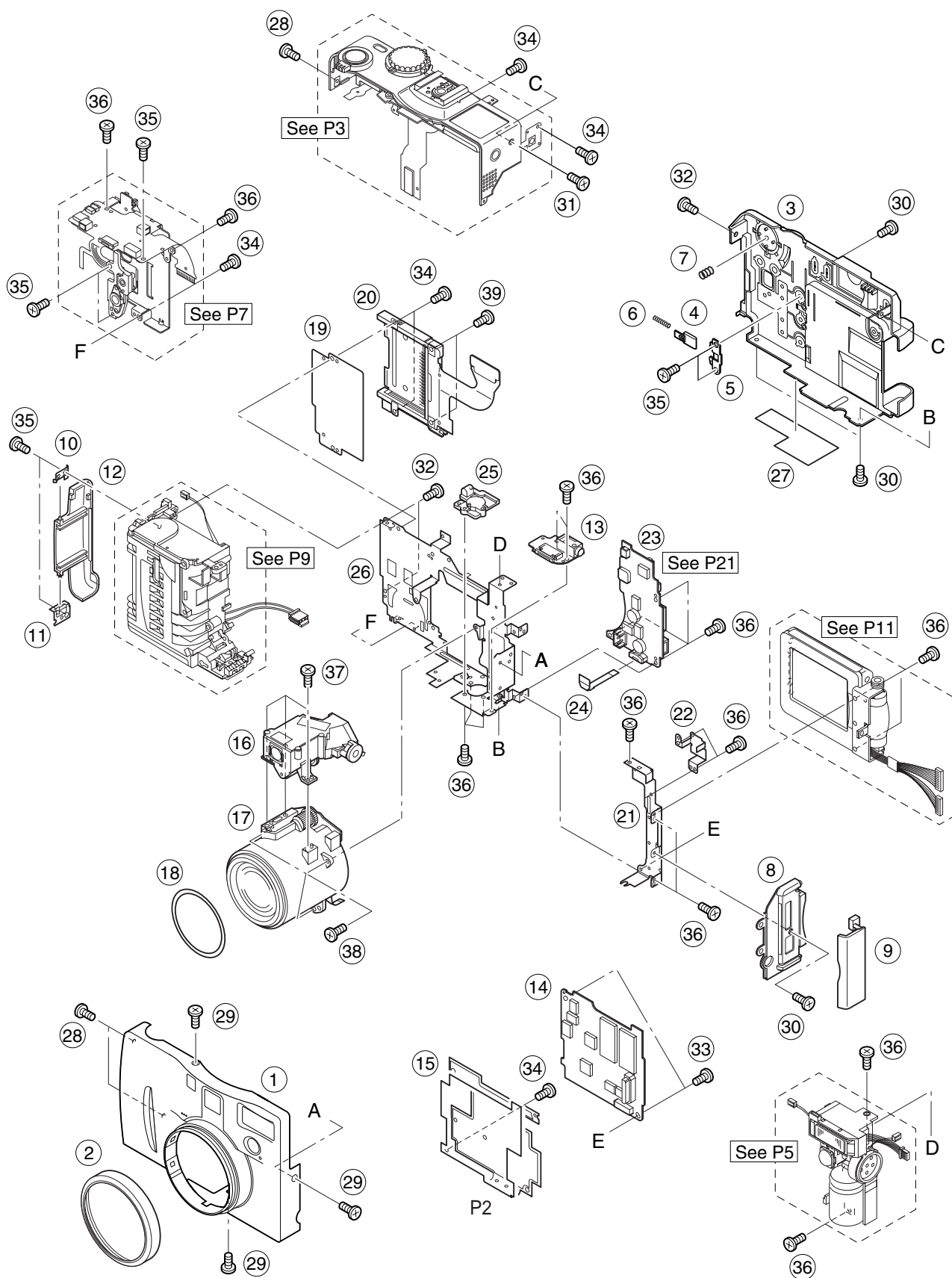


PARTS CATALOG

Main parts/units



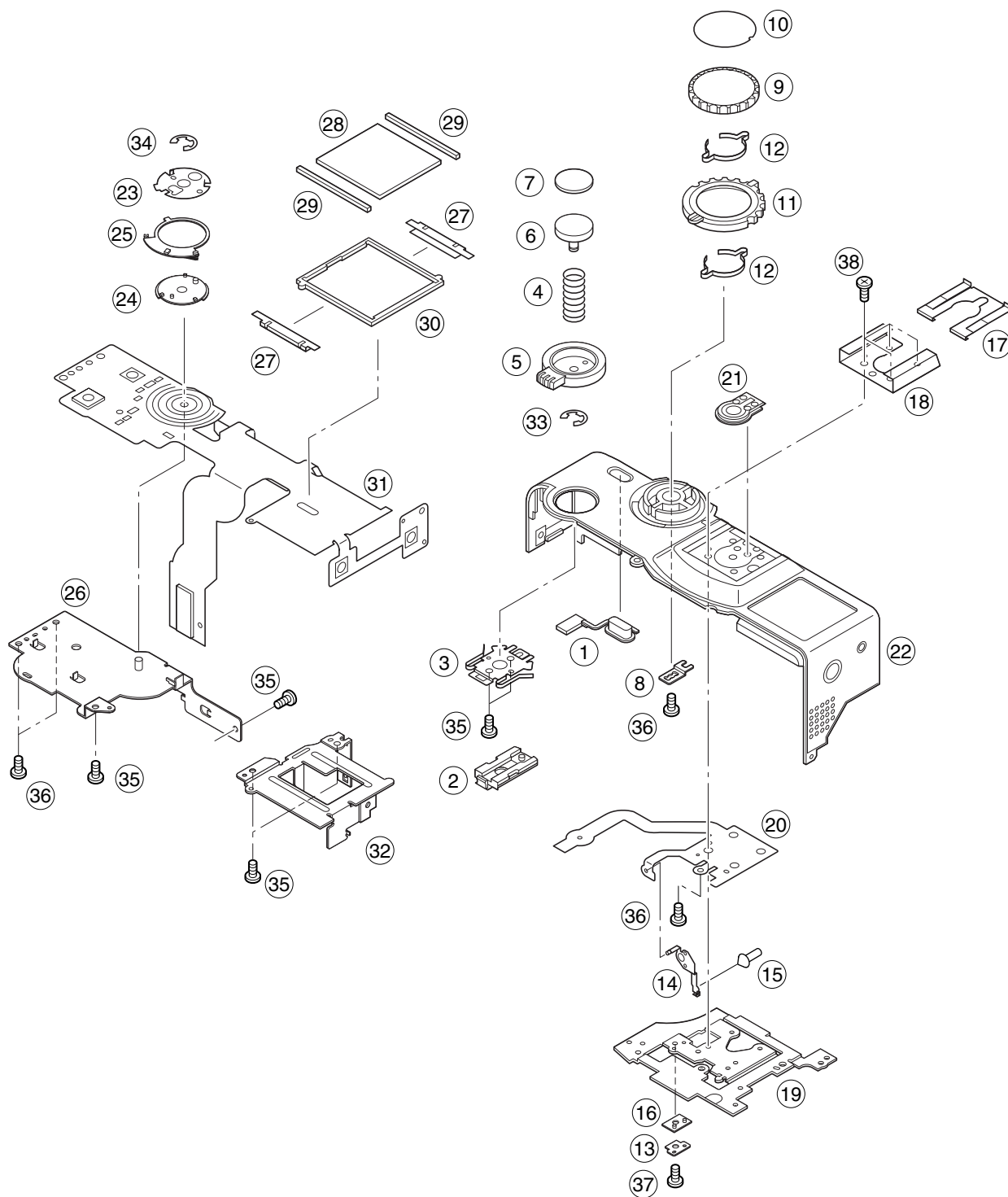
Parts List

SYMBOL	NEW	PARTS NO.	CLASS	Q'TY	DISCRIPTION	REMARKS
1	*	CM1-1069-000	B	1	FRONT COVER UNIT	
2	*	CD1-3216-000	B	1	RING, FRONT	
3	*	CM1-1068-000	B	1	REAR COVER UNIT	
4	*	CD1-3191-000	B	1	SLIDER, LCD LOCK	
5	*	CD1-3192-000	C	1	STOPPER, LCD LOCK	
6	*	CS8-5210-000	C	1	SPRING, LCD LOCK	
7	*	CS8-5211-000	C	1	SPRING, SELECTOR	
8	*	CD1-3185-000	B	1	COVER, JACK	
9	*	CD1-3174-000	B	1	COVER, SIDE	
10	*	CD1-3229-000	C	1	SPRING, CF CLICKING 1	
11	*	CD1-3230-000	C	1	SPRING, CF CLICKING 2	
12	*	CD1-3176-000	B	1	COVER, CF	
13	*	CM1-1075-000	C	1	PCB ASS'Y, JACK	
14	*	CM1-1078-000	C	1	PCB ASS'Y, MAIN	
15	*	CD1-3197-000	C	1	SHEET, MAIN	
16	*	CY1-6068-000	B	1	FINDER UNIT	
17	*	CY1-6069-000	B	1	OPTICAL UNIT	
18	*	CD1-3268-000	B	1	PLATE, LENS	
19	*	CD1-3231-000	C	1	PLATE, CF	
20	*	CM1-1077-000	C	1	CF UNIT	
21	*	CD1-3253-000	C	1	FRAME, SUB	
22	*	CD1-3244-000	C	1	FRAME, MINI	
23	*	CM1-1076-000	C	1	PCB ASS'Y, DC/DC CONVERTER	
24	*	CK1-0518-008	C	1	FPC, VID	
25	*	CD1-3255-000	C	1	BASE, TRIPOD	
26	*	CD1-3232-000	C	1	FRAME, MAIN	
27	*	CY1-6067-000	B	1	PLATE, BODY NUMBER	
28	*	CD1-3280-000	F	2	SCREW	
29	*	CD1-3277-000	F	3	SCREW	
30	*	CD1-3278-000	F	6	SCREW	
31	*	CD1-3279-000	F	1	SCREW	
32		XA4-9170-409	F	3	SCREW	
33		FC2-8736-000	F	2	SCREW	
34		XA1-7170-167	F	6	SCREW	
35		XA4-9170-359	F	5	SCREW	
36		XA1-7170-307	F	19	SCREW	
37		XA4-9170-407	F	3	SCREW	
38	*	XA1-7170-407	F	3	SCREW	
39		XA4-9170-609	F	2	SCREW	

Category of "CLASS"

A: Frequency of use: High
 B: Frequency of use: Middle
 C: Frequency of use: Low
 D: Safety-related critical parts
 E: Consumable parts
 F: Standard screws and washers
 S: Supply of the parts is limited

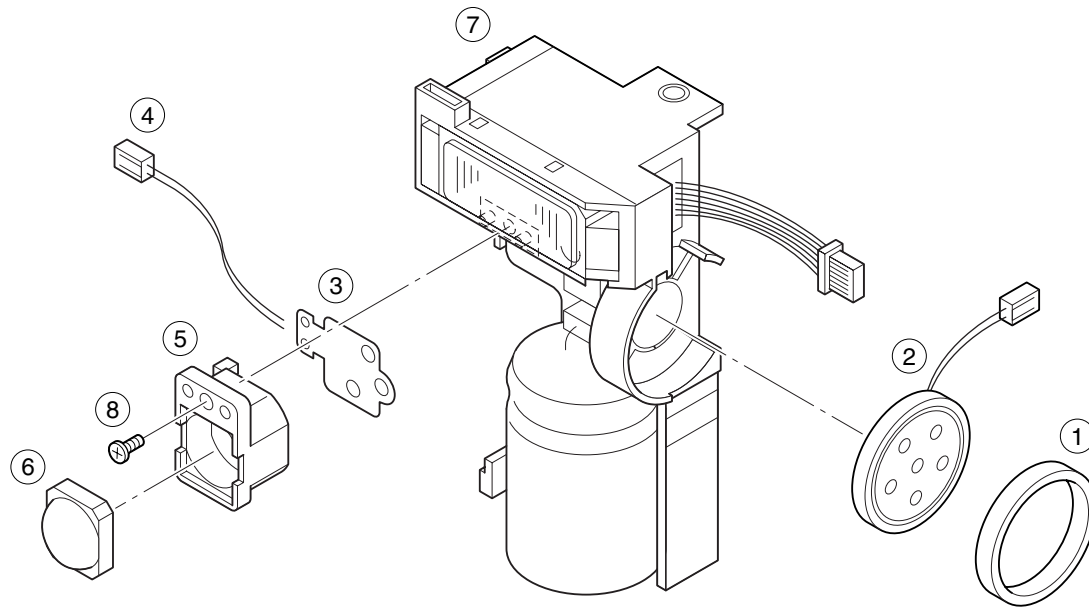
TOP UNIT



Parts List

SYMBOL	NEW	PARTS NO.	CLASS	Q'TY	DISCRIPTION	REMARKS
1	*	CD1-3252-000	B	1	BUTTON, SELF TIMER	
2	*	CL1-1006-000	C	1	BRUSH, ZOOM	
3	*	CD1-3260-000	C	1	SPRING, ZOOM	
4	*	CS2-5656-000	C	1	SPRING, RELEASE	
5	*	CD1-3259-000	B	1	LEVER, ZOOM	
6	*	CD1-3250-000	C	1	BUTTON, RELEASE	
7	*	CD1-3251-000	B	1	CAP, RELEASE	
8	*	CB2-0574-000	C	1	PLATE, MODE CONNECTIVE	
9	*	CD1-3243-000	B	1	DIAL, MODE	
10	*	CD1-3241-000	B	1	PLATE, MODE DIAL	
11	*	CD1-3242-000	B	1	DIAL, MAIN	
12	*	CD1-3236-000	B	2	SPRING, MODE CLICK	
13	*	CD1-3226-000	C	1	BASE, ACCESSORY DETECT 2	
14	*	CD1-3225-000	C	1	PLATE, ACCESSORY DETECT	
15	*	CD1-3224-000	C	1	PIN, ACCESSORY SHOE	
16	*	CD1-3223-000	C	1	BASE, ACCESSORY DETECT 1	
17	*	CA1-9328-000	C	1	SPRING, ACCESSORY SHOE	
18	*	CB1-6258-000	C	1	SHOE, ACCESSORY	
19	*	CD1-3265-000	B	1	FRAME, ACCESSORY SHOE	
20	*	CK1-0519-000	C	1	FPC, ACCESSORY SHOE	
21	*	CA1-6504-000	B	1	ACCESSORY CONTACT UNIT	
22	*	CM1-1081-000	B	1	TOP COVER UNIT	
23	*	CD1-3234-000	C	1	PLATE, MODE BASE	
24	*	CL1-1009-000	C	1	BRUSH, MODE DIAL	
25	*	CL1-1008-000	C	1	BRUSH, MAIN	
26	*	CL1-1005-000	C	1	FRAME, MODE DIAL	
27	*	CD1-3246-000	C	2	CLIP, B/W LCD	
28	*	CK9-0318-000	C	1	PANEL, B/W LCD	
29	*	CD1-3245-000	C	2	RUBBER, CONTACT	
30	*	CD1-3248-000	C	1	HOLDER, B/W LCD	
31	*	CM1-1080-000	C	1	TOP MODULE UNIT	
32	*	CD1-3249-000	C	1	FRAME, B/W LCD	
33	*	XD2-1100-132	C	1	RING, E	
34	*	XD2-1100-172	C	1	RING, E	
35		XA1-7170-167	F	6	SCREW	
36		XA4-9170-359	F	4	SCREW	
37		XA1-7170-307	F	1	SCREW	
38	*	XA1-3170-407	F	4	SCREW	

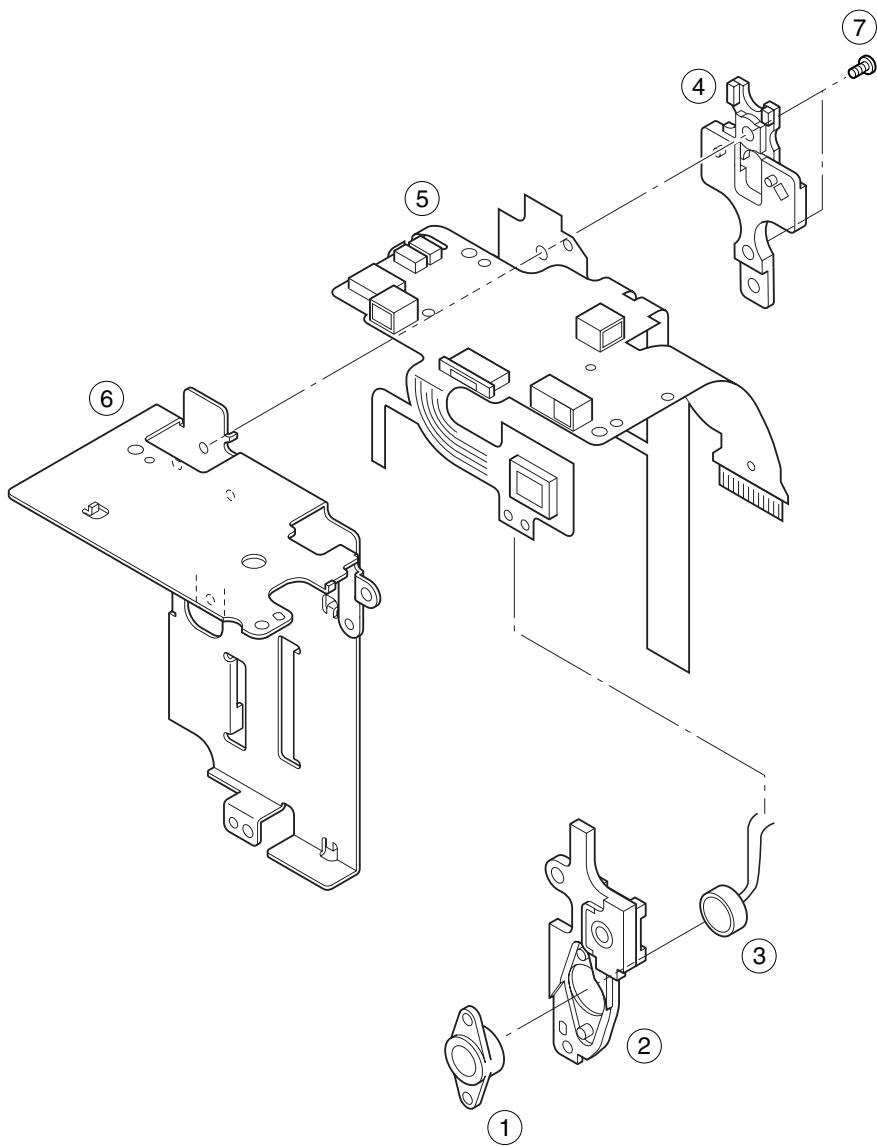
FLASH/SPEAKER UNIT



Parts List

SYMBOL	NEW	PARTS NO.	CLASS	Q'TY	DISCRIPTION	REMARKS
1	*	CD1-3281-000	C	1	BUSH, SPEAKER	
2	*	CM1-1055-000	C	1	SPEAKER UNIT	
3	*	CM1-1059-000	C	1	FPC, AF LED	
4	*	CK2-1168-000	C	1	LEAD, AF LED	
5	*	CD1-3211-000	C	1	HOLDER, AF LED	
6	*	YN2-1146-000	C	1	LENS, AF LED	
7	*	CM1-1060-000	C	1	FLASH UNIT	
8		XA4-9170-359	F	1	SCREW	

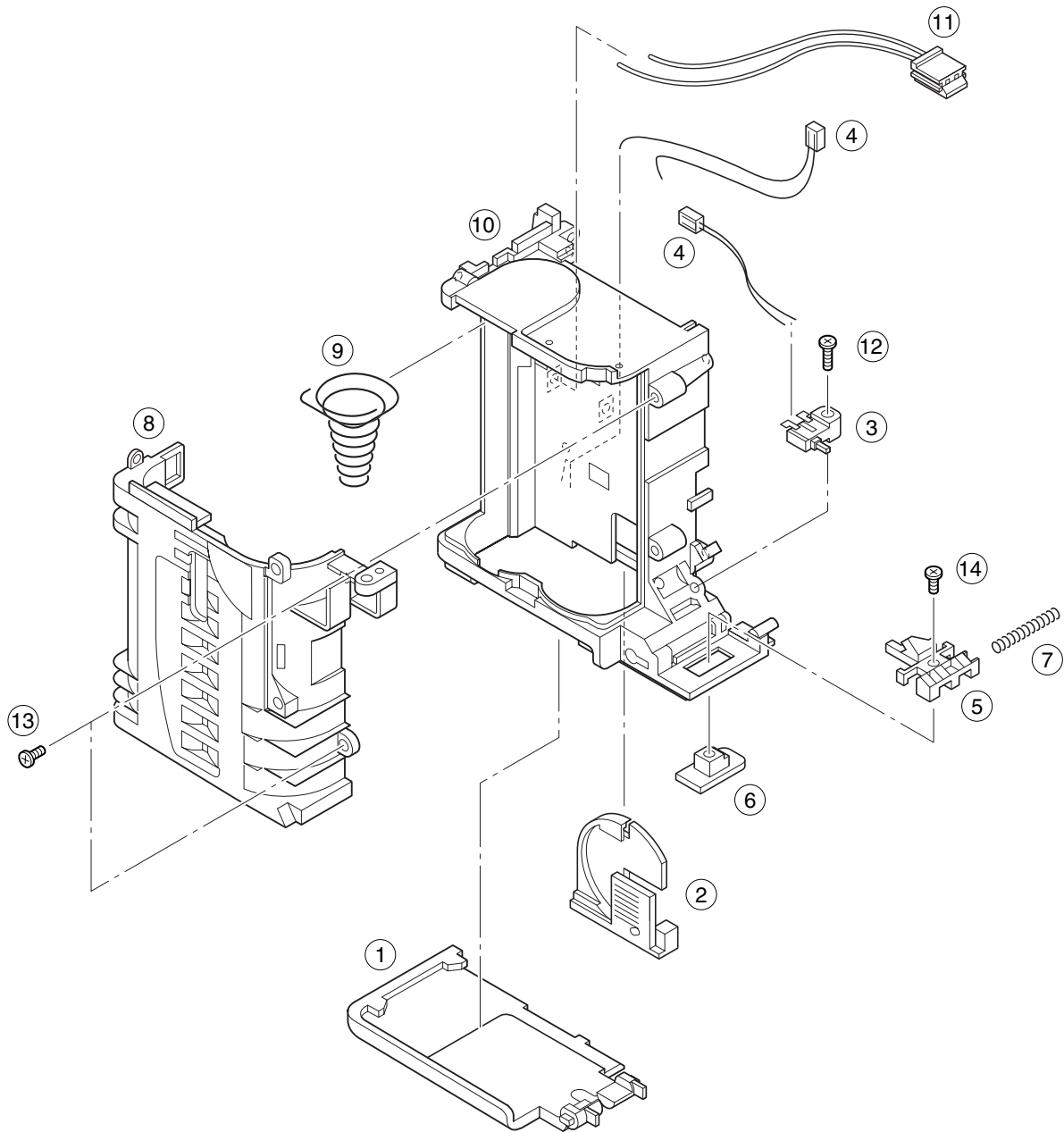
REAR PLATE UNIT



Parts List

SYMBOL	NEW	PARTS NO.	CLASS	Q'TY	DISCRIPTION	REMARKS
1	*	CD1-3213-000	C	1	HOLDER, MICROPHONE	
2	*	CD1-3212-000	C	1	COVER, FLASH IC	
3	*	CM1-1056-000	C	1	MICROPHONE UNIT	
4	*	CD1-3187-000	C	1	BASE, SEL.BUTTON	
5	*	CM1-1083-000	C	1	PCB ASS'Y, BUTTON	
6	*	CD1-3186-000	C	1	FRAME, REAR	
7		XA1-7170-307	F	2	SCREW	

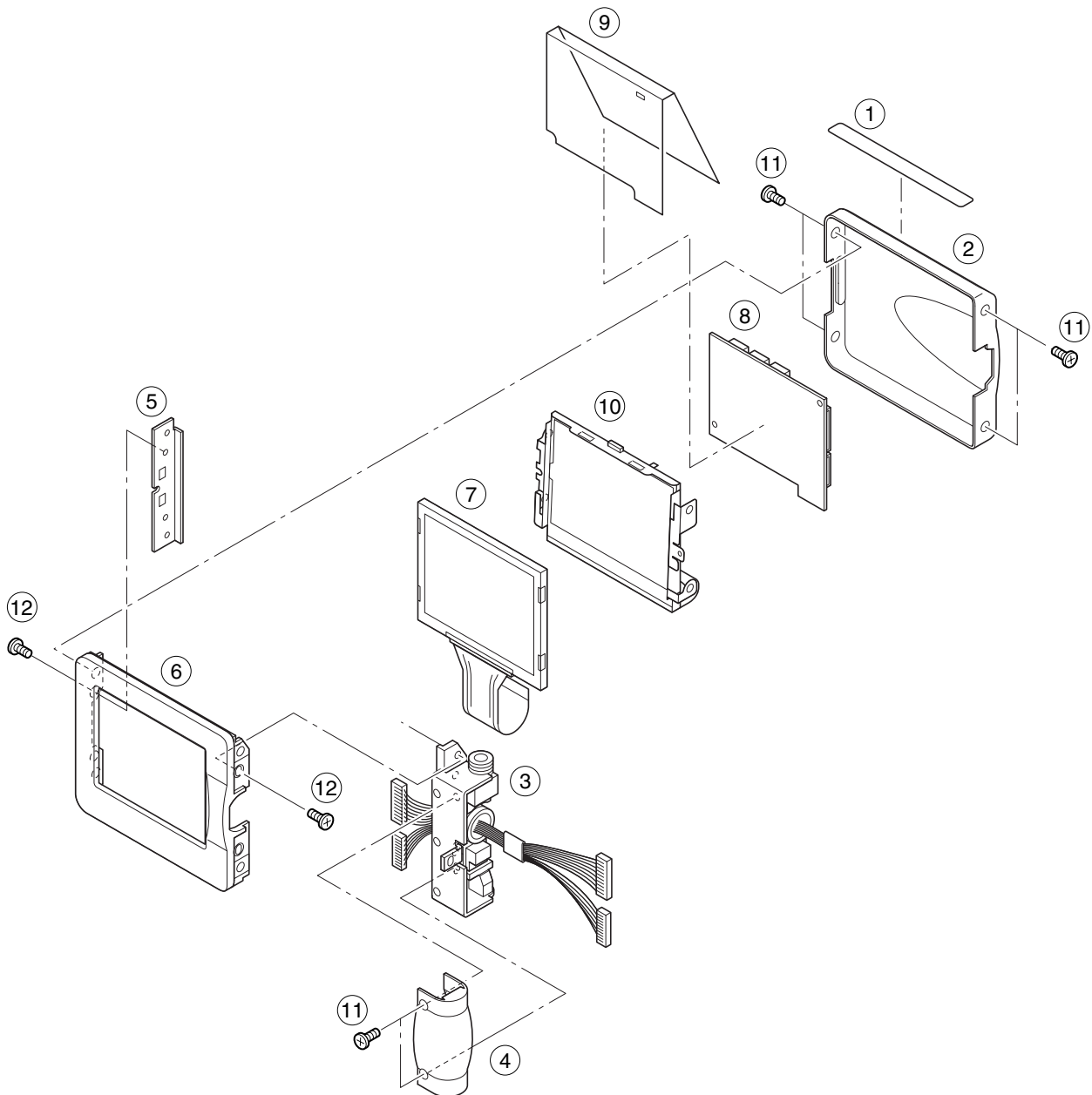
BATTERY BOX UNIT



Parts List

SYMBOL	NEW	PARTS NO.	CLASS	Q'TY	DISCRIPTION	REMARKS
1	*	CD1-3175-000	B	1	COVER, BATTERY	
2	*	CD1-3264-000	B	1	HOLDER, DATE BATTERY	
3	*	WC2-0102-000	C	1	SWITCH, BATTERY LOCK	
4	*	CK2-1169-000	C	1	LEAD, SUB	
5	*	CD1-3227-000	C	1	LOCK, BATTERY COVER	
6	*	CD1-3228-000	B	1	OPENER, BATTERY COVER	
7	*	FS4-2684-000	C	1	SPRING, BATTERY LOCK	
8	*	CD1-3266-000	C	1	COVER, BATTERY BOX	
9	*	CS8-5214-000	C	1	SPRING, BATTERY EJECT	
10	*	CL1-1007-000	C	1	BATTERY BOX MAIN UNIT	
11	*	CK2-1167-000	C	1	LEAD, POWER	
12		XA4-9170-359	F	1	SCREW	
13		XA4-9170-609	F	2	SCREW	
14	*	XA4-9200-657	F	1	SCREW	

LCD/HINGE UNIT



Parts List

SYMBOL	NEW	PARTS NO.	CLASS	Q'TY	DISCRIPTION	REMARKS
1	*	CD1-3283-000	B	1	PLATE, LCD	
2	*	CD1-3182-000	B	1	COVER, LCD TOP	
3	*	CM1-1054-000	C	1	HINGE UNIT	
4	*	CD1-3189-000	C	1	COVER, HINGE	
5	*	CD1-3193-000	C	1	PLATE, NUT	
6	*	CD1-3181-000	B	1	COVER, LCD FRAME	
7	*	WG2-5199-001	C	1	PANEL, LCD	
8	*	CY1-6075-000	C	1	PCB ASS'Y, LCD	
9	*	CD1-3194-000	C	1	SHEET, LCD	
10	*	CM1-1073-000	C	1	BACK LIGHT UNIT	
11	*	CD1-3278-000	F	4	SCREW	
12		XA1-7170-307	F	2	SCREW	

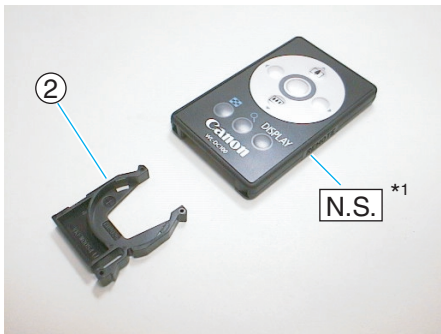
Accessories



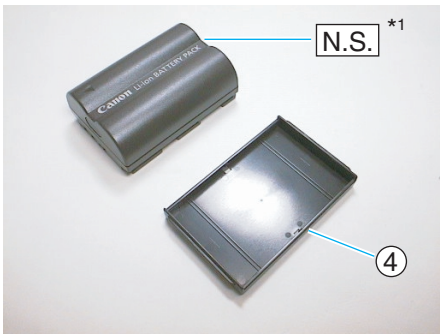
Neck Strap NS-DC100



Lens Cap



Wireless Controller WL-DC100*1



Battery Pack BP-511*2



Compact Power*2
Adapter CA-560

PLUG TYPE



JPN



N



E



B



AS

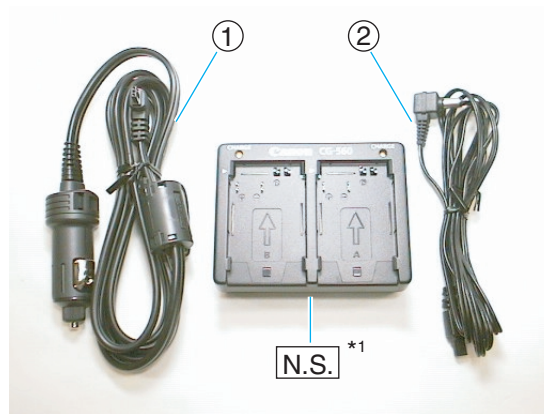
*1 N.S. stands for No Stock

*2 Product available

Parts List

SYMBOL	NEW	PARTS NO.	CLASS	Q'TY	DISCRIPTION	REMARKS
1	*	C84-1029-000	B	1	STRAP, NECK	
2	*	CY1-6074-000	B	1	HOLDER, BATTERY	
3	*	C84-1028-000	B	1	LENS CAP UNIT	
4	*	DY1-8242-000	C	1	COVER, TERMINAL BP-511/BP-522	
5	*	D82-0641-000	C	1	CORD, AC(DOM)	
6	*	D82-0642-000	C	1	CORD, AC(N)	
7	*	D82-0643-000	C	1	CORD, AC(E)	
8	*	D82-0644-000	C	1	CORD, AC(B)	
9	*	D82-0645-000	C	1	CORD, AC(AS)	

Accessories



Charge Adapter/Car Battery Cable Kit CR-560*2



Wide Converter WC-DC58*2



Tele Converter TC-DC58*2

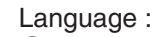
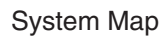
*1 N.S. stands for No Stock

*2 Product available

Parts List

SYMBOL	NEW	PARTS NO.	CLASS	Q'TY	DISCRIPTION	REMARKS
1	*	DY1-8243-000	C	1	CAR BATTERY CABLE CB-560	
2	*	DY1-8244-000	C	1	DC CABLE	
3	*	CY1-6071-000	B	1	CAP, FRONT	
4	*	CY1-6072-000	B	1	CAP, REAR	
5	*	CY1-6073-000	B	1	CAP, FRONT	

① Solution DISK CD-ROM



- ⑩ Japanese
- ⑪ English
- ⑫ French
- ⑬ Spanish

N.S.

Language :

- ② Japanese
- ③ English
- ④ French
- ⑤ Spanish



- ⑥ Japanese
- ⑦ English
- ⑧ French
- ⑨ Spanish



Parts List

SYMBOL	NEW	PARTS NO.	CLASS	Q'TY	DISCRIPTION	REMARKS
1	*	CY1-6070-000	S	1	SOLUTION DISK CD-ROM	
2	*	CY8-9010-013	S	1	CAMERA USER GUIDE(J)	Japanese
3	*	CY8-9020-010	S	1	CAMERA USER GUIDE(E)	English
4	*	CY8-9030-009	S	1	CAMERA USER GUIDE(F)	French
5	*	CY8-9040-007	S	1	CAMERA USER GUIDE(S)	Spanish
6	*	CY8-9010-019	S	1	SOFTWARE STARTER GUIDE(J)	Japanese
7	*	CY8-9020-014	S	1	SOFTWARE STARTER GUIDE(E)	English
8	*	CY8-9030-013	S	1	SOFTWARE STARTER GUIDE(F)	French
9	*	CY8-9040-011	S	1	SOFTWARE STARTER GUIDE(S)	Spanish
10	*	CY8-9010-014	S	1	SYSTEM MAP(J)	Japanese
11	*	CY8-9020-011	S	1	SYSTEM MAP(E)	English
12	*	CY8-9030-010	S	1	SYSTEM MAP(F)	French
13	*	CY8-9040-008	S	1	SYSTEM MAP(S)	Spanish

Service Tools

① DIA BOND 1663B



② CEMEDINE SUPER X (B)



③ THREE BOND 1401C



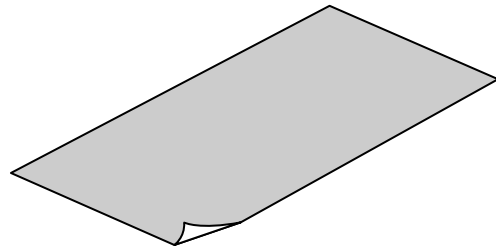
④ LOGENEST RAMBDA A-74



⑤ ADHESIVE TAPE SONY T4000



⑥ 18% GRAY CHART



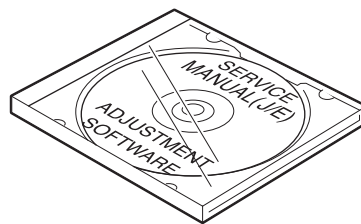
⑦ C-12 FILTER



⑧ W-10 FILTER



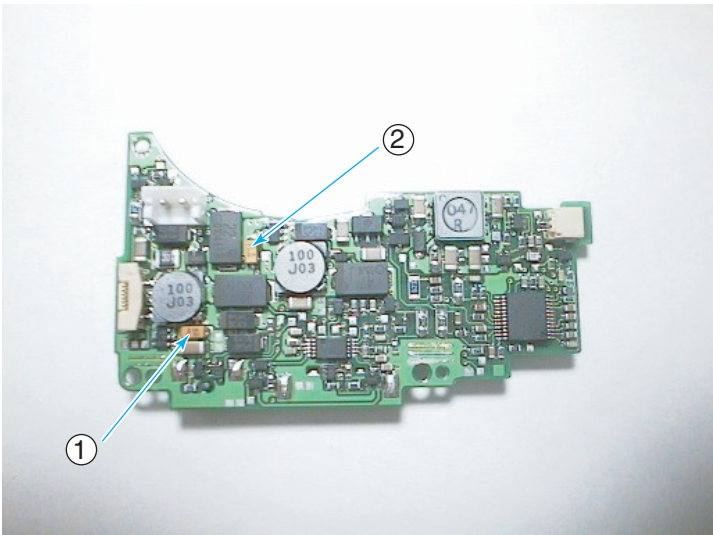
⑨ SERVICE MANUAL & ADJUSTMENT SOFTWARE CD-ROM



Parts List

SYMBOL	NEW	PARTS NO.	CLASS	Q'TY	DISCRIPTION	REMARKS
1	*	DY9-3008-000	Y	1	BOND, DIA BOND NO.1663 BLACK	200ml
2	*	CY9-8118-000	Y	1	BOND, CEMEDINE SUPER X 8008 BLACK	20ml
3	*	CY9-8011-000	Y	1	BOND, THREE BOND 1404C	200g
4	*	CY9-8102-000	Y	1	LUBE, LOGENEST RAMBDA A-74	80g
5	*	CY4-6012-000	Y	1	ADHESIVE TAPE, SONY T4000	6mm x 50m roll
6	*	CY4-6016-000	Y	1	CHART, 18% GRAY	1.5m x 3m
7	*	DY9-2029-000	Y	1	FILTER, C-12	
8	*	CY9-1543-000	Y	1	FILTER, W-10	
9	*	CY8-4368-031	Y	1	CD-ROM, SERVICE MANUAL(J/E)	including Adjustment Software

Fuse



DC/DC CONVERTER PCB ASS'Y

Parts List

SYMBOL	NEW	PARTS NO.	CLASS	Q'TY	DISCRIPTION	REMARKS
1	*	CY4-6069-000	C	1	FUSE,DAITO KE25	F01
2	*	CY4-6070-000	C	1	FUSE,DAITO KE32	F02